

How to access online learning platforms such as my maths, spelling shed and gooseberry planet

1. My maths

My maths is supported by the following browsers

Browser	OS / Version	Status
Internet Explorer	Windows 7 / Version 11	Supported ✓
	Windows 8.1 / Version 11	Supported ✓
	Windows 10 / Edge	Supported ✓
	Windows XP / Version 8.0	Unsupported ✗
	Windows 7 / Versions 8.0, 9.0, 10	Unsupported ✗
Google Chrome	Windows / Current version	Supported ✓
	iOS / Current version	Unsupported ✗
	Android / Current version	Unsupported ✗
Mozilla Firefox	Windows / Current version	Supported ✓
Safari	MAC OS Safari / Current version	Supported ✓
	iOS / Current version	Unsupported ✗

Key

- Unsupported ✗
- Known Issue ⚠
- Supported ✓
- Testing ⚙

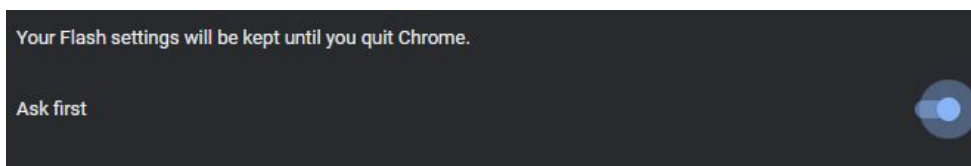
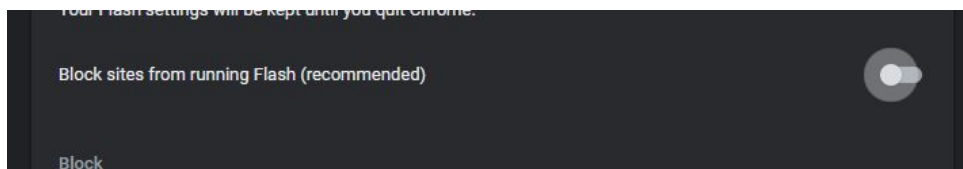
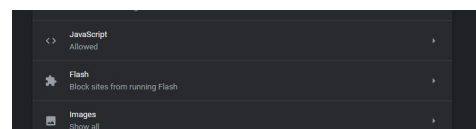
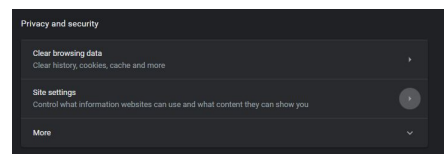
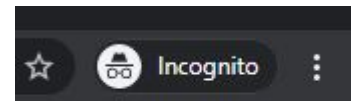
MyMaths and Flash

All MyMaths lessons, homework tasks, worksheets, and booster packs across Key Stages 1 – 2 are now out of Flash and accessible on tablets (according to my-maths) Additional updates to games and tools will be ongoing this term. Look out for further information as they complete the work to move away from Flash.

How to enable flash

Chrome

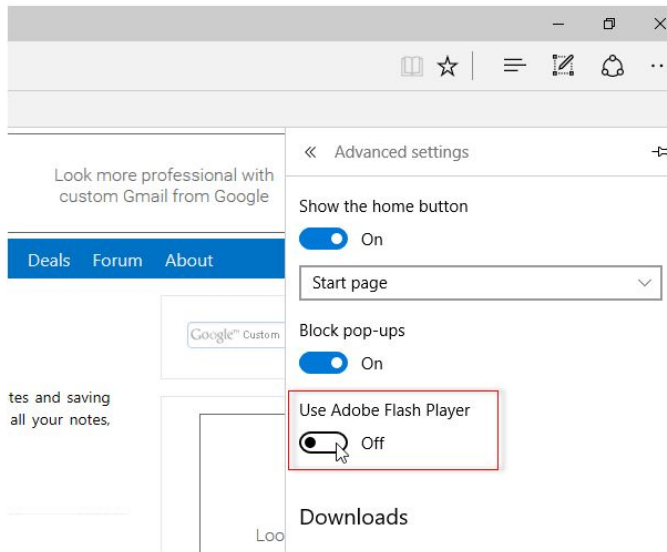
1. Go to the vertical three dots, click and select settings (near the bottom)
2. Select site settings
3. Look down the list to find flash - click on flash
4. Slide the block sites from using flash across (which will ask you when a site is trying to use flash if you allow it)



Turn on Adobe Flash Player in Microsoft Edge browser

To disable or enable Flash Player, open Microsoft Edge, click on the three-dotted button and select **Settings**.

Scroll down to the bottom and select **View advanced settings**.



On the next page, you can find an option called **Use Adobe Flash Player**. Toggle the button to turn it on or off.

Logging in

<https://www.mymaths.co.uk/>

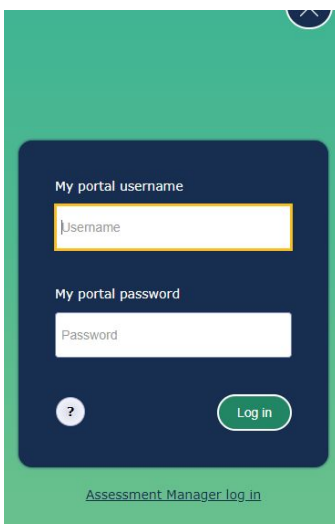
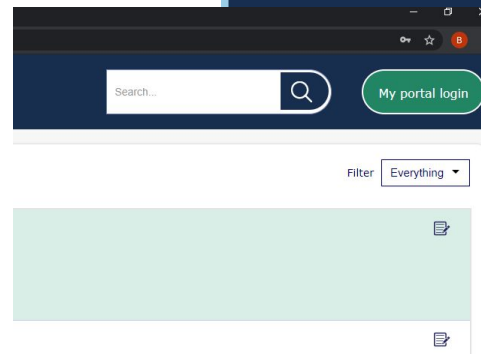
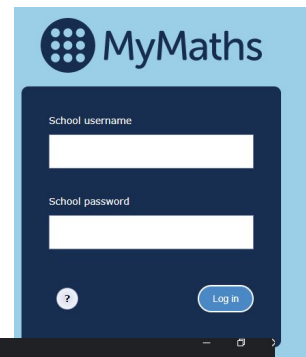
Once you login, you will see the following screen.

The school username is: harwell

The school password is: harwell2016

On the next screen, click on **my portal login**

You child will have their username and login



Assignments should be now accessible.

2. Spelling Shed <https://www.spellingshed.com/>

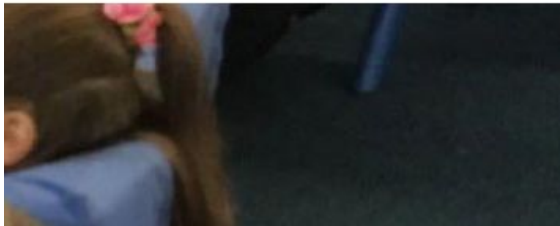
Leagues

Store

Help

Sign In →

Top right hand corner - sign in

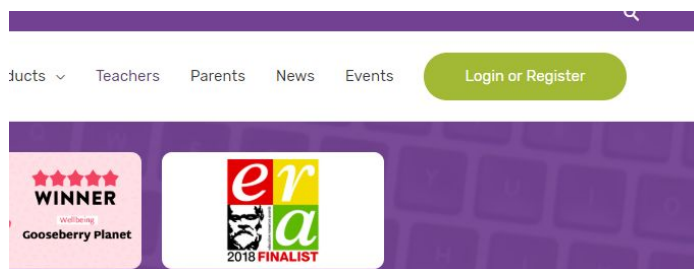


Children have a username and password

3. Gooseberry planet - <https://gooseberryplanet.com/>

Focus online safety

It is a game based platform which promotes online awareness and safety



Select login



Select gooseberry student

Input username

The password is a colour, animal and a number



The next screen is the different areas that the children have access to (greyed out means access is denied due to age appropriateness)